



3302

TO ORDER: Tel 800-347-5678 • Fax 800-726-0601 • www.grahamfield.com

Returns: Parts may not be returned without prior authorization from GF Health Products, Inc. Custom parts cannot be returned for credit. Please refer to GF Health Products, Inc. Terms and Conditions for further information.

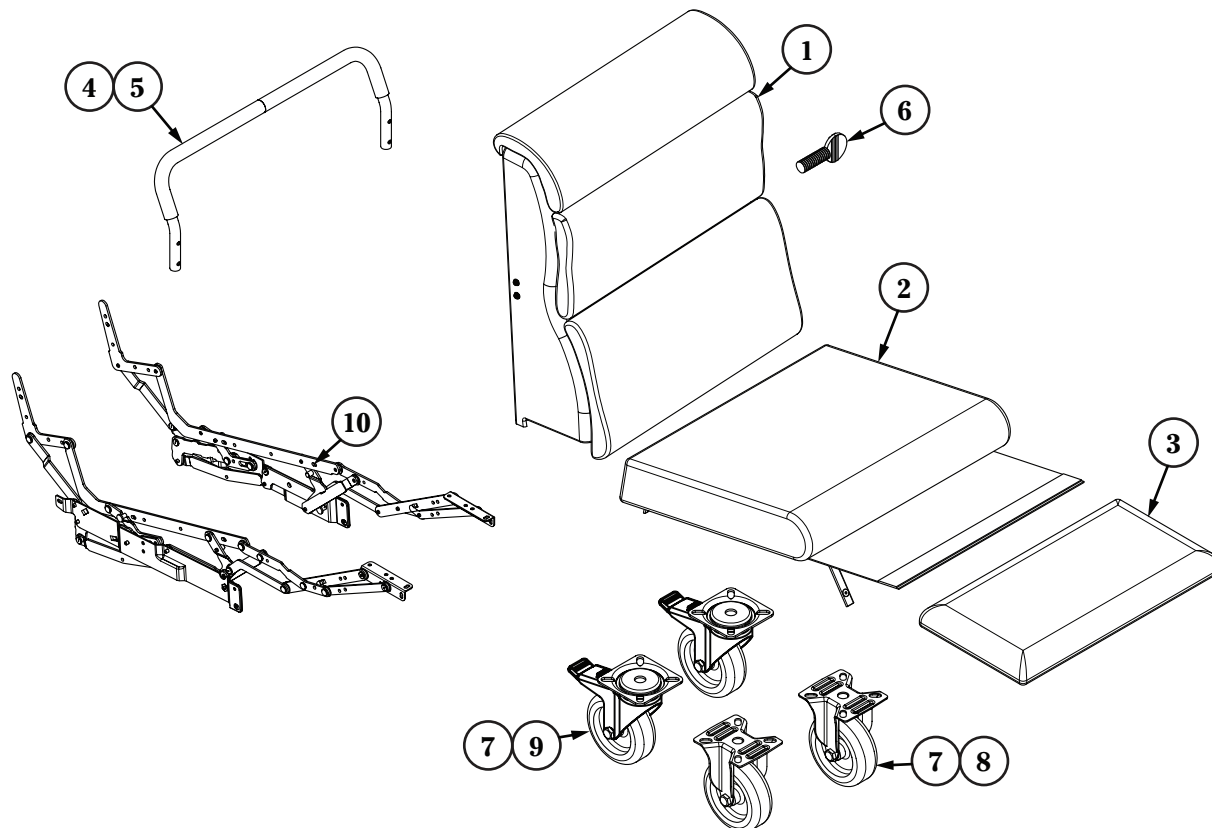
GF Health Products, Inc. is not responsible for typographical errors. Packaging, warranties, products and specifications are subject to change without notice. Lumex® and Graham-Field® are registered trademarks of GF Health Products, Inc.



© June 2009, GF Health Products, Inc., All Rights Reserved

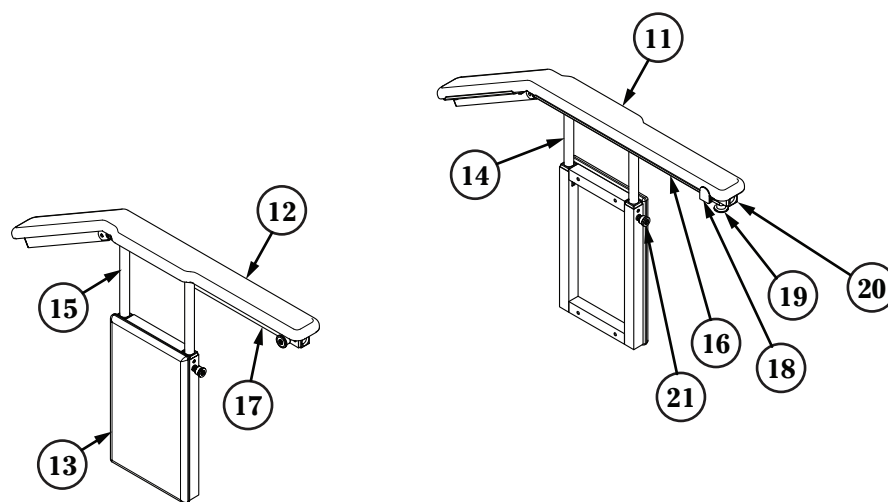
GF Health Products, Inc. • 2935 Northeast Parkway, Atlanta, GA 30360 • tel 800-347-5678 • fax 800-721-0602 • www.grahamfield.com

3302/3304 Recliner: Replacement Parts List



	ITEM NUMBER	DESCRIPTION	QTY/UNIT
1A	30002UXXX	Back Upholstery	1 each
1B	30002UXXXFR	Back Upholstery (CA-133 Fire Rated)	1 each
2A	33001UXXX	Seat Cushion Upholstery	1 each
2B	33001UXXXFR	Seat Cushion Upholstery (CA-133 Fire Rated)	1 each
3A	33004UXXX	Legrest Upholstery	1 each
3B	33004UXXXFR	Legrest Upholstery (CA-133 Fire Rated)	1 each
4	3920S100	Push Handle with Grip and Hardware	1 each
5	9205	Grip, Push Handle	1 each
6	HY323126	Thumb Screw	1 each
7	WW130004	Caster, Front and Rear Wheel, for 330 Series	1 each
8	WY130001	Fixed Yoke, Front Casters	1 each
9	WY130004	Swivel Yoke, Rear Casters	1 each
10	3300F200	Recliner Mechanism	1 pair

3302/3304 Recliner: Replacement Parts List



	ITEM NUMBER	DESCRIPTION	QTY/UNIT
11A	33005UXXXL	Left Armrest Upholstery	1 each
11B	33005UXXXL-FR	Left Armrest Upholstery (CA-133 Fire Rated)	1 each
12A	33005UXXXR	Right Armrest Upholstery	1 each
12B	33005UXXXR-FR	Right Armrest Upholstery (CA-133 Fire Rated)	1 each
13A	3308UXXX	Side Panel Upholstery	1 set
13B	3308UXXX-FR	Side Panel Upholstery (CA-133 Fire Rated)	1 set
14	3900A020	Left Drop Arm Assembly	1 each
15	3900A030	Right Drop Arm Assembly	1 each
16	5644A012	Left Arm Receiving Tube - Complete Assembly	1 each
17	5644A015	Right Arm Receiving Tube - Complete Assembly	1 each
18	PP500012	Table Lock-Out Clip	1 each
19	5740S900	Pull Button Assembly	6/bag
20	PP100099	Reducer Cap	10/bag
21	3300A101	Pull Pin, Side Panel Lock	1 each