

Zenith 9000

 **Basic
American**™



Zenith 90000



 **Basic
American**™

SilverSolutions within the powder-coating provides antimicrobial surface protection.

SilverSolutions inhibits the growth of organisms that can detract from the appearance and coating functionality:

- Inhibits the growth of bacterial odors
- Resists stains caused by mildew
- Resists stains caused by mold

SilverSolutions preserves the cured coating during the service life of the bed.

GF Health Products, Inc. makes no independent representations or empirical statements about SilverSolutions.

This information is reprinted from: TCI Powder Coatings, EPA Guidance for EPA Registration 40 CFR 152.25

The new Zenith Series resident beds bring you the superior quality and features you've come to expect from Basic American. The **Zenith9000** provides *comfort, safety, and quiet, efficient operation*. With input from users, we've added even more functionality to ensure that your resident and caregiver needs are met.

The solutions, innovation, and features you need from the name you trust: Zenith... all at an affordable price.

Designed for comfort and efficient operation

Height travel range: 7" to 30"

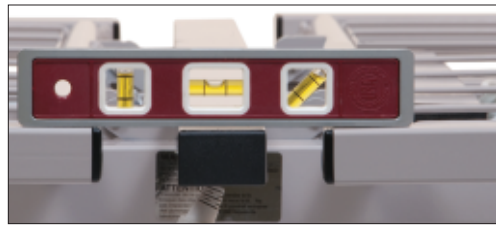
Straight vertical rise protects walls and maintains footprint.

Strong, no-sag grid deck sleep surface with sturdy cross braces.

Safe work load: 600 pounds*

Timesaver Technology™ - fast, even-speed motors save time.





Synchronized high-low motors keep the bed level for proper therapeutic positioning. When the head position is lower than the heart, lung volume may be compromised, causing airway problems, making it more difficult to breathe. Uneven sleep surfaces may cause a risk of brain swelling and reduced systolic and diastolic pressures.

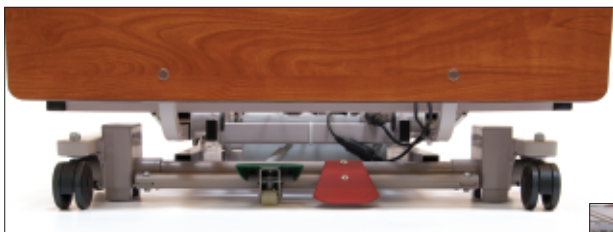


Sealed ball bearings ensure maintenance-free, continuous, silent operation.

Quick disconnect to control box simplifies maintenance.



Grounded hospital-grade plug is a standard feature.



Intuitive two-pedal locking system is centrally positioned and easily visible from a distance to ensure that the bed is locked. Pedal locks are readily accessible at ALL bed heights and widths, even in the lowest position. Bed rolls at any height reducing caregiver back strain.



Optional **embedded staff control** in footboard

- Angled for better visibility
- Two-stage lockouts – lockout of pendant use and lockout of embedded staff control.



Bed provides 360° mobility at ANY height.

Directional mechanism on front caster is accessible at all heights for ease in rolling the bed.



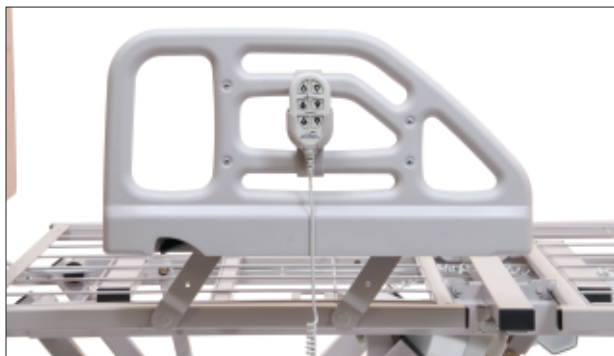
Bed easily adjusts for use at 76" or 80" length.

- **Adjustable wall saver** positions (76", 80", and for use with a trapeze) provide the smallest footprint at each length, while protecting the wall (included with bed).
- **Adjustable mattress retainer** securely supports mattress position for 76" or 80" length (included with bed).
- **Edema foot ratchet** to elevate the foot end of the bed (included with bed).



Maximum underbed clearance for use with overbed tables and lifts.

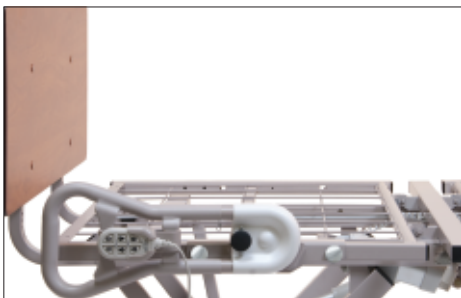
Optional Half Length Assist Device and Assist Bars provide a sturdy and secure hand hold to assist residents in and out of bed. Assist devices are removable without tools and meet FDA Entrapment Guidelines.



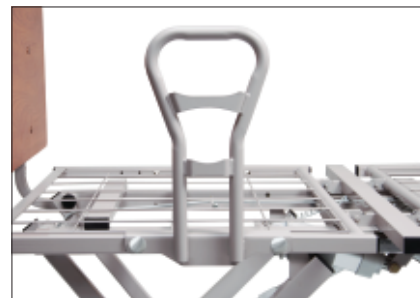
Warm-to-the-touch Half Length Assist Device
ZA84200

Warm-to-the-touch half-length assist device and pivot assist bars:

- Move out of the way for lateral transfers.
- Pivot away from egress area.
- Provide toe clearance even in lowest position to prevent staff injury.
- Hand pendant mounts facing inward or outward and away from hand grab area.



Pivot Assist Bar ZA85400 (tool-less)
ZA87900 (bolt-on)



Fixed Assist Bar ZA85000 (tool-less)
ZA87800 (bolt-on)



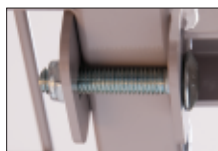
Pendant Hand Control and Holster
Easy operation contoured pendant is shock-resistant, splash-proof and durable. Pendant connects to either side of the bed to adapt to varying room layouts. Holster conveniently secures to bedrails and assist devices for easy access.

Battery Backup Kit
Provides the ability to perform bed functions in the event of power outage.
ZA84400 Battery Backup and Charger

Length Extension Kit
Transform your bed to 84" with this optional 4-inch sleep deck extension.
ZA85350 Standard 35" width
ZA85300 for 39" or 42" widths



Wide Deck Kit
Optional wide kit adjusts the bed sleep deck to 39" or 42" width for greater resident comfort. (Head and foot boards and staff control electronics not included.)
ZA858000 39" wide deck kit
ZA851000 42" wide deck kit



May be attached with bolts or quick release pins.

Trapeze Adapter
Optional trapeze adapter allows for easy attachment of trapeze system to headboard within easy reach for residents for repositioning themselves.



ZA79000 (for use with
ZA78100 Trapeze Bar)



Basic American Zenith® Series Specifications

U.S. Patents

- Multiple Patents Pending

Height Travel Range.....	7" to 30"
Safe Work Load*.....	600 lbs.
Mattress Deck Length.....	76"/80"
Mattress Deck Width.....	35"
Overall Bed Length (76"/80")	81.75"/85.75" with wall saver
Overall Bed Width.....	39" with assist bar
Overall Bed Width.....	40.75" with half length assist devices
Maximum back angle.....	70°
Maximum knee angle.....	30°

Tool-less assembly minimizes set-up time.

Proudly Made in the U.S.A.



NEW Improved Warranty

- 15 years on frame
- **5 years on motors and control box**
- 3 years on other electronics

The Zenith9000 bed and accessories are in full compliance with the FDA guidelines for reducing the risk of bed entrapment, "Hospital Bed System Dimensional and Assessment Guidance to Reduce Entrapment". Details can be found at: www.fda.gov.

For more information on the Zenith Series, please visit us online at www.grahamfield.com or call Basic American today.

* including resident, support surface, head/foot boards, and accessories.

Highest Safety and Quality Standards Unrestricted UL Listing

Built to conform to UL 60601-1, IEC601-2-38, and CAN/CSA C22.2 No. 601.1 the Zenith Series offers the following, ensuring the utmost resident and staff safety:

- No pinch points within 200mm of bed perimeter
- Bed can be used as a transport device because it passes threshold clearance at ALL heights by 20mm
- Splash-proof electronics
- Load capacity and tip-stability tested and approved



1.678.291.3200 Fax 1.770.368.4954

Information contained herein is subject to change.

The most current and complete product information can be found on our website

www.grahamfield.com



© 2016, GF Health Products, Inc. All Rights Reserved.

Basic American Medical Products is a trademark of GF Health Products, Inc.
GF Health Products, Inc. is an ISO 13485 Certified Company

GF1100107 RevC16