



**BASIC AMERICAN**  
**MEDICAL PRODUCTS**  
 A Graham-Field Brand

2935 Northeast Parkway • Atlanta, Georgia 30360  
 T: 770.368.4700

PRESENTS

**GEO MEDLEY**



**GEO MEDLEY**



CRYPTON® SEATING FABRICS

	Content	Weight	Finish / Backing	Directional / Railroaded	Repeat	Abrasion	Flammability*
<b>Align</b>	51% Acrylic, 49% Polyester	16.3 oz	Crypton®	Yes / No	H - 7.25" V - 7.125"	50,000 Double Rubs	California Bulletin 117-E NFPA 260 Class 1 UFAC Class 1
<b>Parallel</b>	51% Acrylic, 49% Polyester	15.2 oz	Crypton®	Yes / No	H - 3.75" V - 2.5"	50,000 Double Rubs	California Bulletin 117-E NFPA 260 Class 1 UFAC Class 1
<b>Segment</b>	51% Acrylic, 49% Polyester	16.9 oz	Crypton®	Yes / No	H - 4.875" V - 2.375"	50,000 Double Rubs	California Bulletin 117-E NFPA 260 Class 1 UFAC Class 1
<b>Structure</b>	51% Acrylic, 49% Polyester	15.1 oz	Crypton®	Yes / No	H - 3.0" V - 3.125"	50,000 Double Rubs	California Bulletin 117-E NFPA 260 Class 1 UFAC Class 1
<b>Triad</b>	51% Acrylic, 49% Polyester	13.8 oz	Crypton®	Yes / No	H - 3.0" V - 3.125"	50,000 Double Rubs	California Bulletin 117-E NFPA 260 Class 1 UFAC Class 1

Roll Width - 54"

All patterns in this collection meet or exceed ACT® Performance Guidelines.



\*ACT® Registered Certification Marks

Dye lots may vary from samples shown.

Final determination of the suitability of this product for an application rests with the user.

\***Flammability:** This term and any corresponding data refer to the typical performance in the specific tests indicated and should not be construed to imply the behavior of this or any other material under actual fire conditions.



Each fiber of a Crypton® fabric is permanently encapsulated to resist stains, fungus, bacteria and mildew. Crypton's breathable moisture barrier is integrated into the fabric, ensuring permanent protection. Crypton® Super Fabrics are engineered to be extremely easy to clean, allowing spots and spills to be easily removed with soap and water.

© 2008 Crypton, Inc. All rights reserved. Crypton and the red planet logo are registered trademarks of Crypton, Inc. U.S. Patents 5,565,265, 5,747,392, 6,024,823, 6,165,920, 6,207,250, 6,251,210, 6,492,001, 6,541,138 and 6,884,491. Other U.S. and international patents pending.

**Align**



Multiple repeats shown.  
 Actual repeat is H - 7.25" and V - 7.125"



**BASIC AMERICAN**  
**MEDICAL PRODUCTS**  
 A Graham-Field Brand

2935 Northeast Parkway • Atlanta, Georgia 30360  
 T: 770.368.4700



## PARALLEL



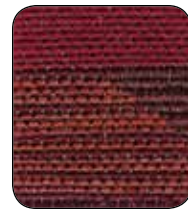
1007164 Blackberry



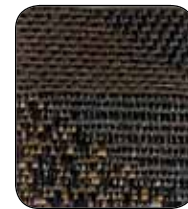
1007169 Angora



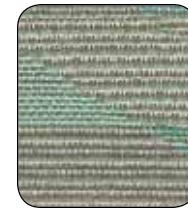
1007168 Mineral



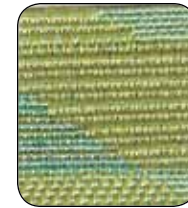
1007163 Scarlet



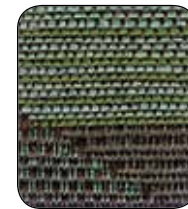
1007162 Acorn



1007167 Marina



1007166 Lagoon



1007165 Mirage

## ALIGN



1007219 Cabernet



1007224 Calypso



1007223 Mint



1007222 Chartreuse



1007227 Alabaster



1007226 Pewter



1007221 Sunset



1007220 Crimson



1007218 Coffee

## STRUCTURE



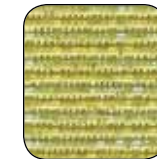
1007145 Maroon



1007151 Mist



1007150 Beige



1007149 Oasis



1007148 Kelp



1007146 Cherry



1007143 Umber



1007144 Ink

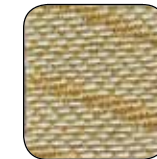


1007147 Navy

## SEGMENT



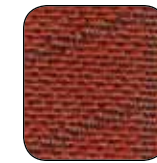
1007154 Cranberry



1007160 Chiffon



1007159 Cobblestone



1007155 Harvest



1007153 Graphite



1007161 Plaster



1007157 Capri



1007158 Citron



1007156 Bahama



1007154 Cranberry



1007152 Brownie

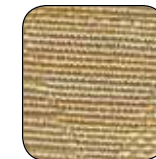
## TRIAD



1007136 Wine



1007142 Oyster



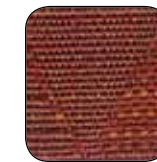
1007141 Desert



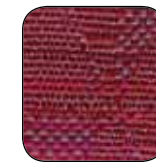
1007140 Celadon



1007139 Sage



1007138 Cinnamon



1007137 Lava



1007134 Hazelnut



1007135 Raven









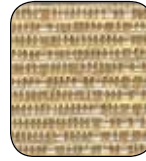
## STRUCTURE



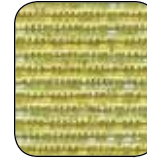
1007145 Maroon



1007151 Mist



1007150 Beige



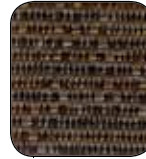
1007149 Oasis



1007148 Kelp



1007146 Cherry



1007143 Umber



1007144 Ink



1007147 Navy

## SEGMENT



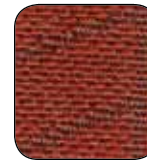
1007154 Cranberry



1007160 Chiffon



1007159 Cobblestone



1007155 Harvest



1007153 Graphite



1007161 Plaster



1007157 Capri



1007158 Citron



1007156 Bahama



1007154 Cranberry



1007152 Brownie

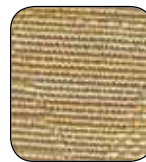
## TRIAD



1007136 Wine



1007142 Oyster



1007141 Desert



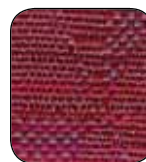
1007140 Celadon



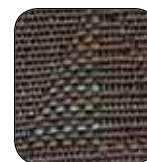
1007139 Sage



1007138 Cinnamon



1007137 Lava



1007134 Hazelnut



1007135 Raven