



**BASIC AMERICAN**  
**MEDICAL PRODUCTS**  
 A Graham-Field Brand

2935 Northeast Parkway • Atlanta, Georgia 30360  
 T: 770.368.4700

PRESENTS

# NATURAL ORIGINS



## NATURAL ORIGINS



CRYPTON® SEATING FABRICS

	Content	Weight	Finish / Backing	Directional / Railroaded	Repeat	Abrasion	Flammability*
<b>Blade</b>	51% Acrylic, 49% Polyester	14.5 oz	Crypton®	Yes / No	H - 4.875" V - 4.75"	50,000 Double Rubs	California Bulletin 117-E NFPA 260 Class 1 UFAC Class 1
<b>Branch Out</b>	51% Acrylic, 49% Polyester	14.9 oz	Crypton®	Yes / No	H - 14.4375" V - 15.5"	50,000 Double Rubs	California Bulletin 117-E NFPA 260 Class 1 UFAC Class 1
<b>Evolve</b>	51% Acrylic, 49% Polyester	15.0 oz	Crypton®	Yes / No	H - 7.375" V - 8.875"	50,000 Double Rubs	California Bulletin 117-E NFPA 260 Class 1 UFAC Class 1
<b>Grove</b>	51% Acrylic, 49% Polyester	15.0 oz	Crypton®	Yes / No	H - 2.0" V - 0.75"	50,000 Double Rubs	California Bulletin 117-E NFPA 260 Class 1 UFAC Class 1
<b>Hybrid</b>	67% Acrylic, 33% Polyester	14.3 oz	Crypton®	Yes / Yes	V - 2.8125"	50,000 Double Rubs	California Bulletin 117-E NFPA 260 Class 1 UFAC Class 1

Roll Width - 54"

All patterns in this collection meet or exceed ACT® Performance Guidelines.



\*ACT® Registered Certification Marks

Dye lots may vary from samples shown.

Final determination of the suitability of this product for an application rests with the user.

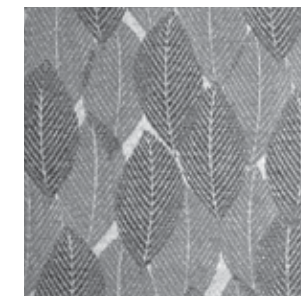
\***Flammability:** This term and any corresponding data refer to the typical performance in the specific tests indicated and should not be construed to imply the behavior of this or any other material under actual fire conditions.



Each fiber of a Crypton® fabric is permanently encapsulated to resist stains, fungus, bacteria and mildew. Crypton's breathable moisture barrier is integrated into the fabric, ensuring permanent protection. Crypton® Super Fabrics are engineered to be extremely easy to clean, allowing spots and spills to be easily removed with soap and water.

© 2008 Crypton, Inc. All rights reserved. Crypton and the red planet logo are registered trademarks of Crypton, Inc. U.S. Patents 5,565,265, 5,747,392, 6,024,823, 6,165,920, 6,207,250, 6,251,210, 6,492,001, 6,541,138 and 6,884,491. Other U.S. and international patents pending.

### Branch Out



Multiple repeats shown.  
 Actual repeat is H - 14.4375" and V - 15.5"



**BASIC AMERICAN**  
**MEDICAL PRODUCTS**  
 A Graham-Field Brand

2935 Northeast Parkway • Atlanta, Georgia 30360  
 T: 770.368.4700

## BRANCH OUT



1007193 Opal



1007193 Opal



1007196 Spice



1007194 Pear



1007197 Jewel



1007190 Dove



1007192 Ginger



1007191 Flax



1007195 Earth



1007198 Phantom

## HYBRID



1007183 Sky



1007188 Plum



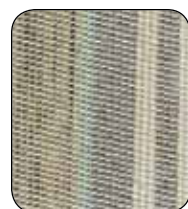
1007185 Galaxy



1007186 Poppy



1007187 Raisin



1007180 Aspen



1007181 Bamboo



1007182 Dijon



1007184 Artichoke



1007189 Java

## EVOLVE



1007212 Quartz



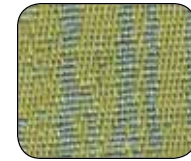
1007209 Frost



1007210 Sand



1007211 Amber



1007213 Aloe



1007217 Slate



1007214 Raspberry



1007216 Mocha



1007215 Fudge

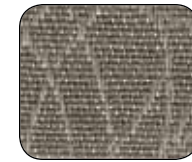
## BLADE



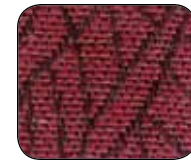
1007203 Breeze



1007199 Linen



1007201 Stone



1007206 Ruby



1007202 Caribbean



1007200 Wheat



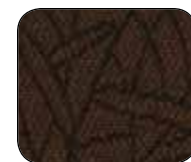
1007205 Mulberry



1007204 Avocado



1007207 Chili



1007208 Espresso

## GROVE



1007170 Vanilla



1007171 Periwinkle



1007172 Walnut



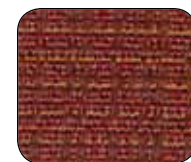
1007173 Brass



1007178 Mahogany



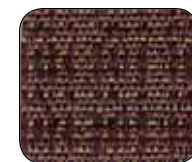
1007174 Sprout



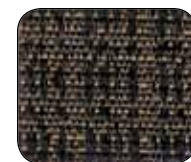
1007175 Clay



1007176 Blaze



1007177 Brandy



1007179 Nightfall







## EVOLVE



1007212 Quartz



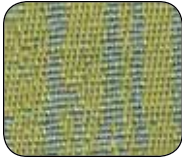
1007209 Frost



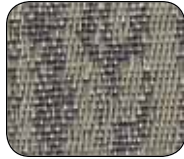
1007210 Sand



1007211 Amber



1007213 Aloe



1007217 Slate



1007214 Raspberry



1007216 Mocha



1007215 Fudge

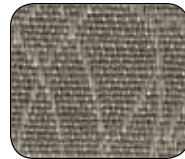
## BLADE



1007203 Breeze



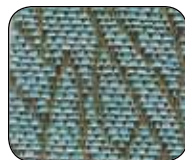
1007199 Linen



1007201 Stone



1007206 Ruby



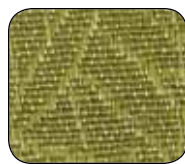
1007202 Caribbean



1007200 Wheat



1007205 Mulberry



1007204 Avocado



1007207 Chili



1007208 Espresso

## GROVE



1007170 Vanilla



1007171 Periwinkle



1007172 Walnut



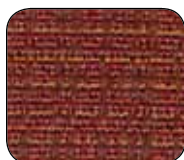
1007173 Brass



1007178 Mahogany



1007174 Sprout



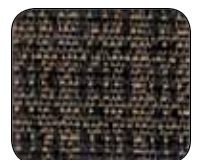
1007175 Clay



1007176 Blaze



1007177 Brandy



1007179 Nightfall