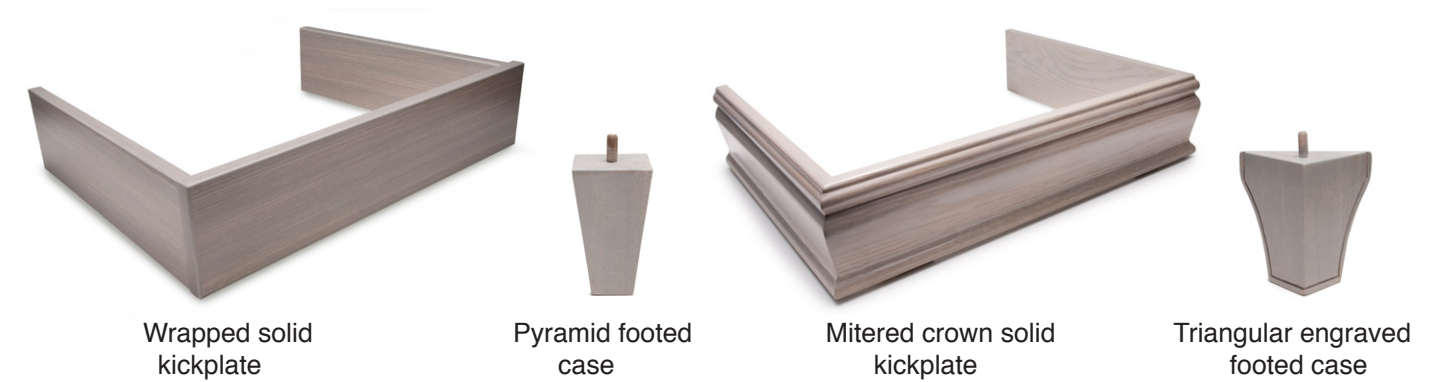
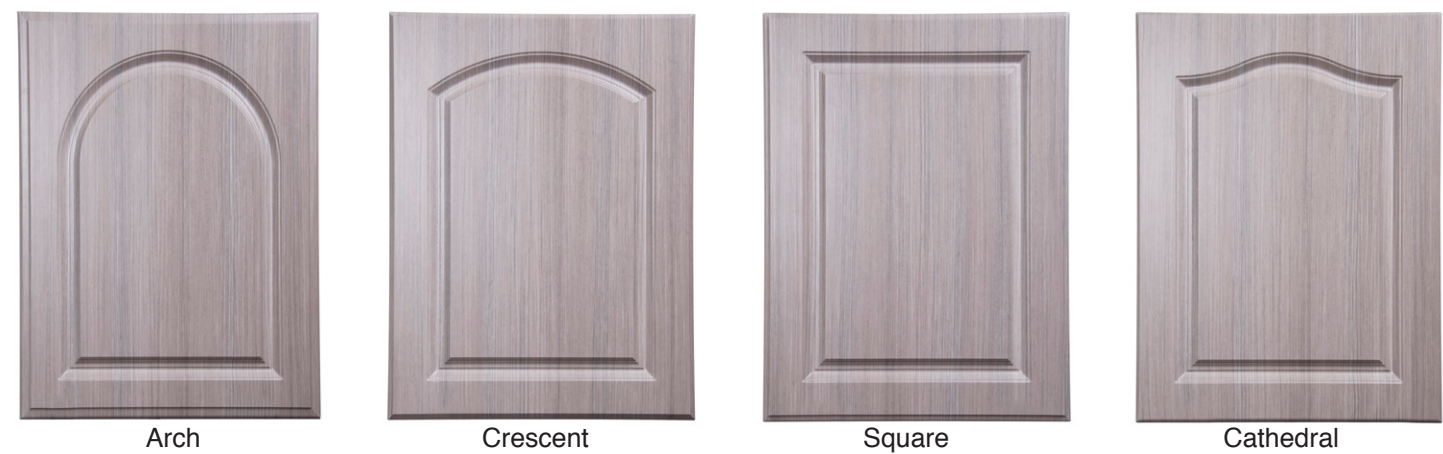


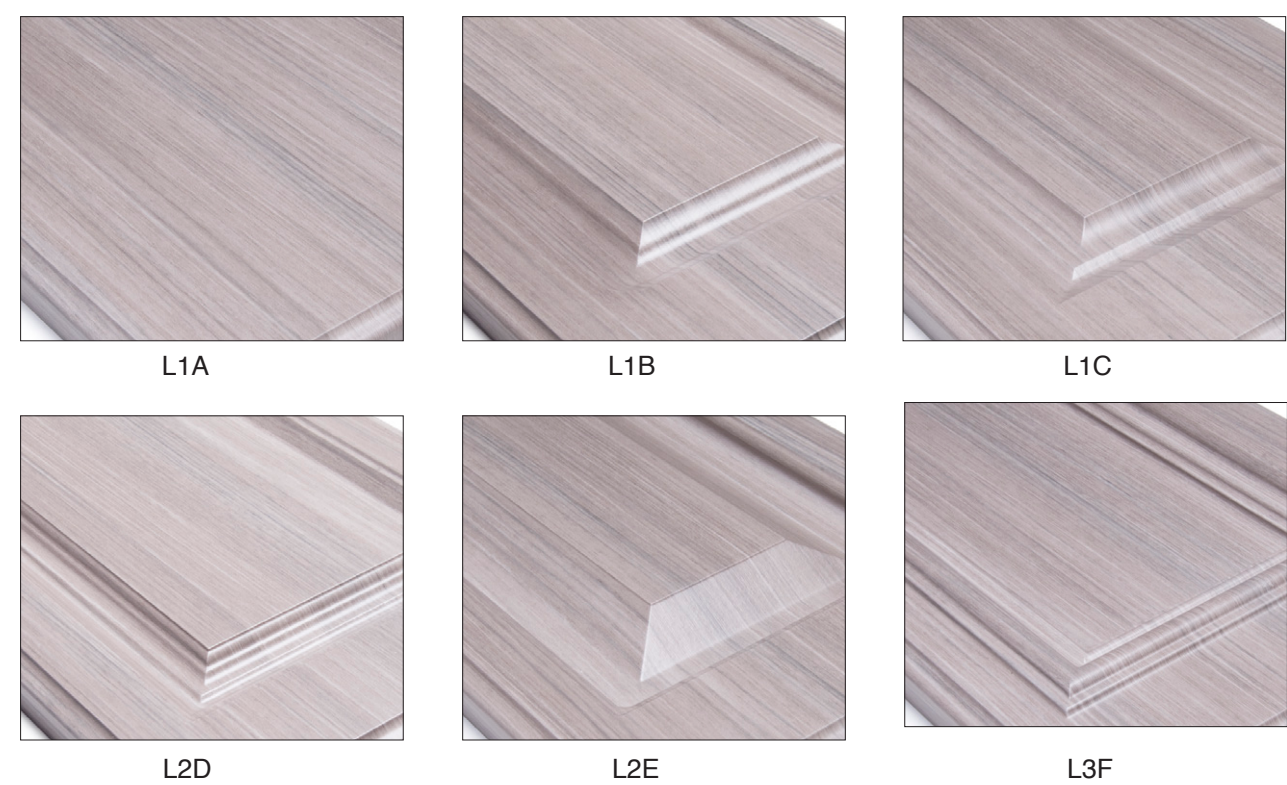
1. Select your base:



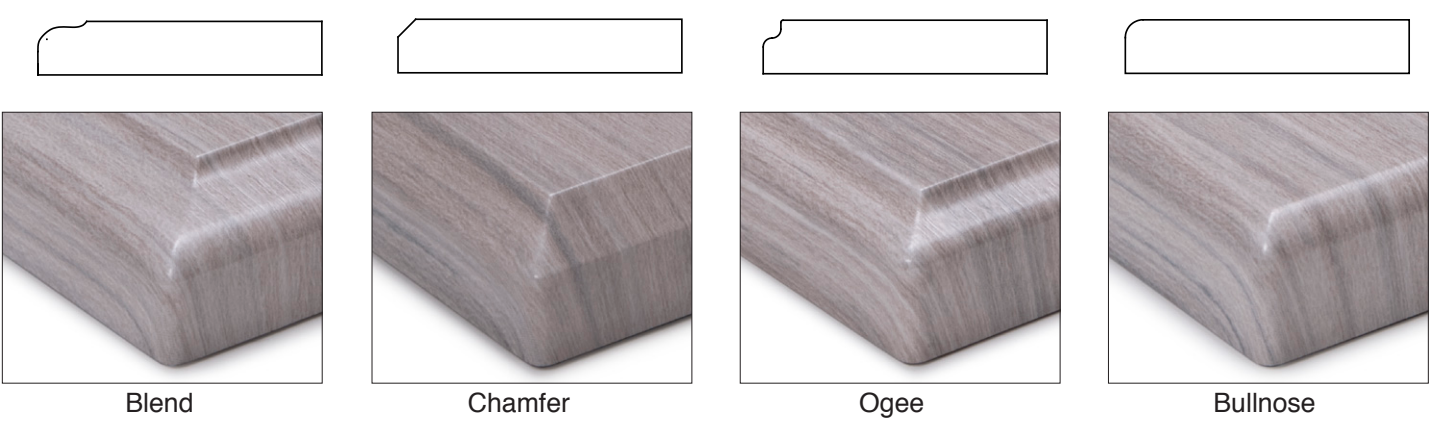
2. Select your wardrobe door profile (drawer profiles are always square):



3. Select your door and wardrobe profile edge detail:



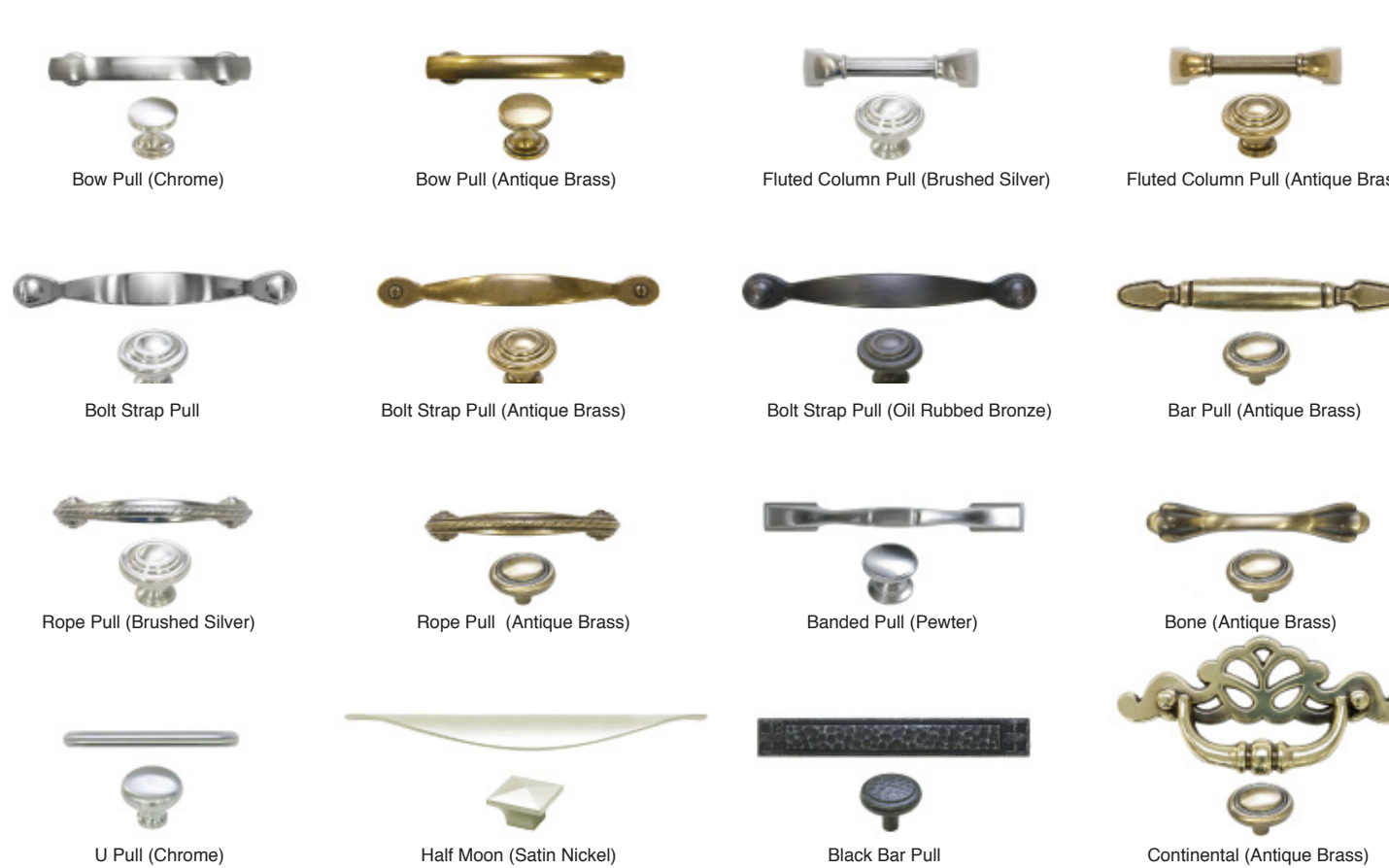
4. Select your door/drawer/top edge detail:



5. Select your finish:



6. Select your hardware:



Customized 3DL Thermoformed Casegoods

Distinguish your environment from the others with your personalized design selections.

*When form and functionality are equally important,
3DL Thermoformed Casegoods combine pleasing aesthetics
with durability.*

*These high performance surfaces provide greater resistance to
moisture and bacterial penetration and are more resistant
to denting, cracking, scuffs and chipping.*



Peachtree Collection



Berkeley Collection



Magnolia Collection



Charleston Collection



1.678.201.3200 Fax 1.770.368.4954

Information contained herein is subject to change.

The most current and complete product information can be found on our website.

www.grahamfield.com

Follow us on

© 2016, GF Health Products, Inc. All Rights Reserved.
Basic American Medical Products is a trademark of GF Health Products, Inc.
GF Health Products, Inc. is an ISO 13485 Certified Company.

GF1600005RevA16