



## Resident Room Collections



# C3 Connecting Casegood Components

C3 is a custom modular solution for addressing furniture needs in both the general healthcare and the long term care environments. The approach provides functionality, allows unique solutions to address specific needs, has the flexibility to change as circumstances require; offering integrated wall units in addition to individual freestanding units.



**Building a Wall System**

## 4 Drawer Dresser Base Unit

C3's base units are freestanding furniture units with the capability to become part of a wall system. All required components are built into each unit.

## 4 Drawer Dresser with Mid Back

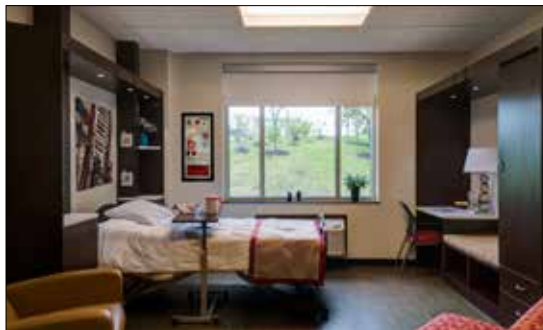
Begin customizing by selecting one of the back options complete with utility chase and ledge, taking advantage of space under windows.

## 4 Drawer Dresser with Full Back

Further design options utilizing a full back. Use as a stand alone unit or build similar units to assemble as a modular wall system.

## 4 Drawer Dresser with Full Back and Canopy

Finish customizing with canopy and lighting.





## C3 Privacy Room Dividers

Dividers provide stylish and functional separation between residents in semi-private rooms in lieu of cubicle curtains. The dividers present a more residential atmosphere. Units can be configured in many design styles and finishes and with custom sizes.

Each resident has personal storage in their own wardrobe and dresser drawers. C3 Room Dividers are seismically engineered by Equipment Anchorage & Seismic Engineering Company to meet CA standards when properly installed.



## 3DL Thermoformed Collections

When form and functionality are equally important, 3DL Thermoformed Casegoods combine pleasing aesthetics with durability. These high performance surfaces provide greater

resistance to moisture and bacterial penetration and are more resistant to denting, cracking, scuffs and chipping.

### Charleston



Suffix-35



Triangular engraved footed case



Cathedral Wardrobe Door Profile



Profile Edge Detail



Bullnose Door/Drawer Edge Detail

### Magnolia



Suffix-34



Mitered crown solid kickplate



Square Wardrobe Door Profile



Profile Edge Detail



Ogee Door/Drawer Edge Detail

## Berkeley



Suffix-33



Pyramid footed case



Crescent Wardrobe Door Profile

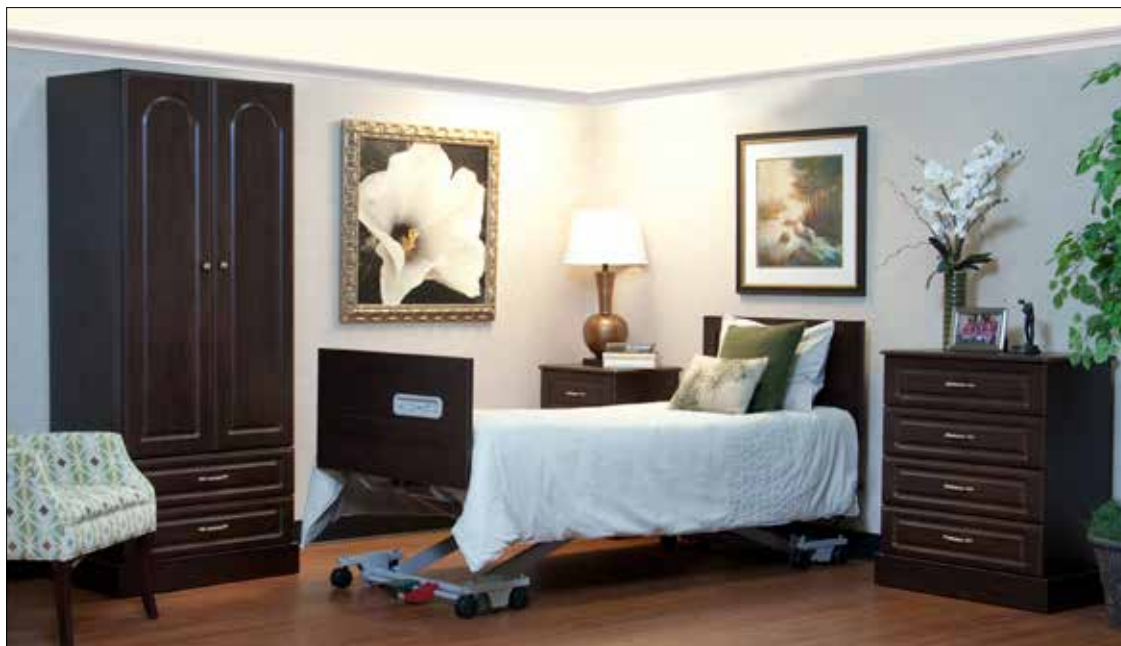


Profile Edge Detail



Chamfer Door/Drawer Edge Detail

## Peachtree



Suffix-32



Wrapped solid kickplate



Arch Wardrobe Door Profile



Profile Edge Detail



Blend Door/Drawer Edge Detail



# Veranda



Suffix-36



3/4" Thick Solid Kickplate  
with 3mm edge



Square Wardrobe  
Door Profile



3/4" Thick Paneled Style  
Overlay with Chamfer  
Profile Edge Detail



Flat 3DL Door/Drawer  
Edge Detail

## Bedford



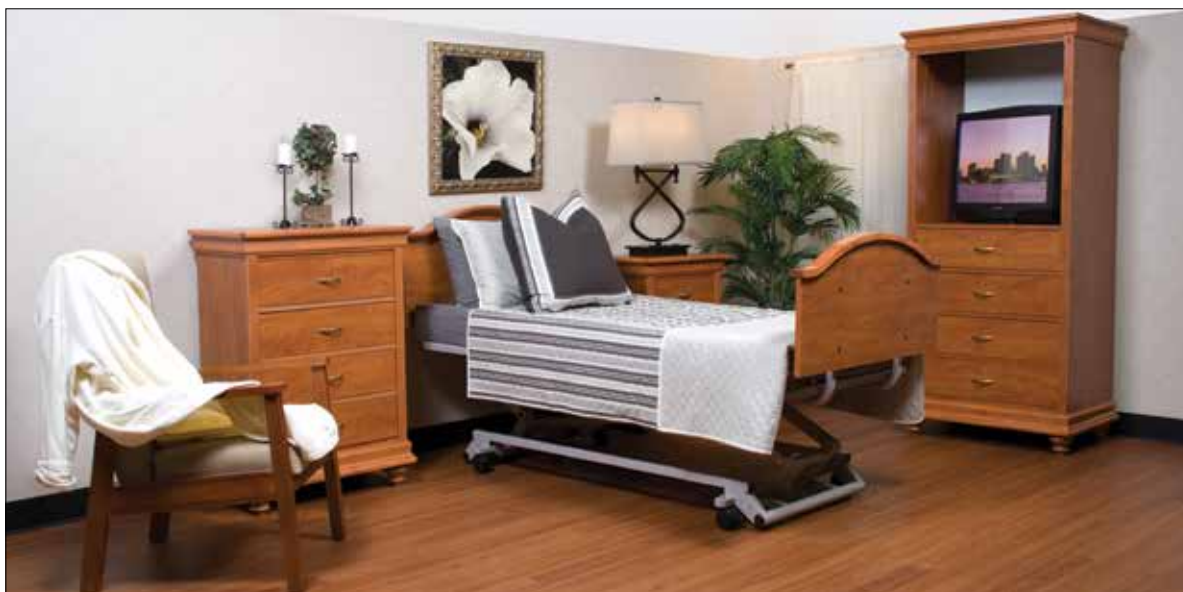
*Suffix-46*

Cloverleaf wood side edges. Rounded corners.

Surface:	Laminate
Top Edge:	Wood
Door/Drawer Front Edges:	Wood, ogee edge
Drawer Style:	Inset on sides, overlay top/bottom
Kickplate:	Square bun wood feet
Wardrobe:	Showtop



## Shannon



*Suffix-48*

Fluted accent moldings. Round overedge with hardwood crown molding.  
Rounded corners

Surface:	Laminate
Top Edge:	Wood, round overedge with hard wood crown molding
Door/Drawer Front Edges:	Self-edge
Drawer Style:	Inset
Kickplate:	Turned bun feet, crown mold detail (option: no bun feet)
Wardrobe:	Showtop with hardwood crown molding



# Denmark



*Suffix-50*

Scandinavian styling. Rounded corners. Available with matching or contrasting door/drawer finishes.

Surface:	Wood and laminate
Top Edge:	Wood
Door/Drawer Front Edges:	Self-edge
Drawer Style:	Inset
Kickplate:	Arched wood siderails
Wardrobe:	Showtop





# Prestwick



Suffix-51

Fluted accent moldings. Round overedge with hardwood crown molding.  
Rounded corners

Surface:	Laminate
Top Edge:	Wood, round overedge with hard wood crown molding
Door/Drawer Front Edges:	Self-edge
Drawer Style:	Inset
Kickplate:	Turned bun feet, crown mold detail (option: no bun feet)
Wardrobe:	Showtop with hardwood crown molding



## Woodland Park



Dentil molding below the tops of each case.

*Suffix-54*

Surface:	Laminate
Top Edge:	Wood
Door/Drawer Front Edges:	Self-edge
Drawer Style:	Inset
Kickplate:	Wood crown mold base
Wardrobe:	Showtop with dentil molding



## Oak Park



Bevel-cut wood edges on door, drawer, and top. Raised panel design elements on casegood sides.

*Suffix-44*

Surface:	Laminate
Top Edge:	Wood, chamfer edge
Door/Drawer Front Edges:	Wood, chamfer edge
Drawer Style:	Inset
Kickplate:	Flush kickplate with cutout
Wardrobe:	Showtop



# New London



*Suffix-68*

Features vertical corner cove moldings and hardwood crown moldings.  
Rounded corners.

Surface:	Laminate
Top Edge:	Wood, hardwood crown moldings
Door/Drawer Front Edges:	Self-edge
Drawer Style:	Inset
Kickplate:	Inset solid kickplate
Wardrobe:	Showtop with hardwood crown moldings





# Savannah



Suffix-52

Frame-style door and drawer fronts Rounded corners.

- |                          |                                     |
|--------------------------|-------------------------------------|
| Surface:                 | Laminate                            |
| Top Edge:                | Wood, ogee edge                     |
| Door/Drawer Front Edges: | Wood, ogee edge                     |
| Drawer Style:            | Inset                               |
| Kickplate:               | Three-sided plinth base with cutout |
| Wardrobe:                | Showtop                             |



## Frame Contrasting Finishes



Figned Mahogany with Amber



Windsor Mahogany with Champagne Windsor



Montana Walnut with Pecan



Wild Cherry with Honey



Maple with Burgundy



Solar Oak with Mocha



Fonhill Pear with Wine



Fonhill Pear with Cream

# Hamilton



Suffix-28

Raised panel door and drawer fronts.

Surface:	Laminate
Top:	1" thick with 3mm radius edge
Door/Drawer Front Edges:	3mm radius edge
Drawer Style:	Overlay
Kickplate:	Overlay, solid kick plate, 1" thick
Wardrobe:	Showtop, 1" thick with 3mm radius edge



# Avante



Suffix-24

Wood edge top, doors, and drawers. Rounded corners.

Surface:	Laminate
Top edge:	Wood edge
Door/Drawer:	Wood side edges, .5mm radius top edges
Drawer Style:	Overlay
Kickplate:	Overlay, solid front kickplate



# Georgetown



SUFFIX	31	W-31	T-31
Surface:	Laminate	Laminate	Laminate
Top Edge:	Wood, ogee edge	Wood, ogee edge	T-mold
Door/Drawer Front Edges:	Thick radius edge	Wood, ogee edge	Thick radius edge
Drawer Style:	Overlay	Overlay	Overlay
Kickplate:	Cut-out front kickplate	Cut-out front kickplate	Cut-out front kickplate
Wardrobe:	Showtop with hardwood crown moldings		

Optional 3-sided plinth base  
Optional Showtop



Flush case sides, rounded top corners.



# Highlands



*Suffix-25*

Clean line styling, rounded corners.

Surface:	Laminate
Top Edge:	T-mold
Door/Drawer:	Thick radius edge
Drawer Style:	Overlay
Kickplate:	3-sided plinth base with crescent cut-out

# Avondale



*Suffix-22*

Straight line styling, rounded corners.

Surface:	Laminate
Top Edge:	T-mold
Door/Drawer Front Edges:	Self-edge
Drawer Style:	Inset (Wardrobe has overlay drawers)
Kickplate:	Available with inset solid kickplate, flush solid kickplate, no front kickplate, or crescent cut-out kickplate
Wardrobe:	Showtop

# Casegood Construction



Drawer fronts are separate from the drawer box, simplifying replacement, if necessary.

Drawer construction includes dowels and staples on sides with an additional bead of glue along perimeter of drawer bottom.



Dressers and bedside cabinets have a stile between each drawer for structural support.

Self-closing drawers have metal drawer slides that are tested to 100 lb capacity per drawer and have drawer stops for safety. Drawers are easily removable by lifting up over the glides.

Ventilated backs of bedsides and dressers promote airflow.

All units have smooth floor glides for ease of movement.

All bedsides, dressers, and wardrobes have a full bottom board for structural support.



European-style hinges provide superior strength and adjustability. Doors can be removed without removing hinges from either the door or cabinet. Hidden hinges offer 110 degree swing and are self-closing.

Wardrobe clothes bar height is adjustable.

All bedsides, dressers, and wardrobes have a full bottom board for structural support.

All units have smooth floor glides for ease of movement.

Optional locks are available for all units. Locks are generally placed on the top bedside drawer or on wardrobe doors. Two keys are provided per lock. Master keys are available with initial order.

# Casegood Hardware Selections:

Bow Pull (Chrome)	Bow Pull (Antique Brass)	Fluted Column Pull (Brushed Silver)	
Bolt Strap Pull (Brushed Silver)	Bolt Strap Pull (Antique Brass)	Bolt Strap Pull (Oil Rubbed Bronze)	Bar Pull (Antique Brass)
Rope Pull (Brushed Silver)	Rope Pull (Antique Brass)	Banded Pull (Pewter)	Bone (Antique Brass)
U Pull (Chrome)	Half Moon (Satin Nickel)	Black Bar Pull	Continental (Antique Brass)

## Finishes

Kensington Maple	Solar Oak	Fonthill Pear	Wild Cherry	Biltmore Cherry
Windsor Mahogany	Shaker Cherry	Montana Walnut	Empire Mahogany	Cocobala
Talas Cherry	Aria	Arctic Groovz		

## 3DL Thermoformed Finishes

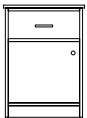




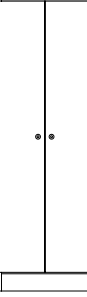
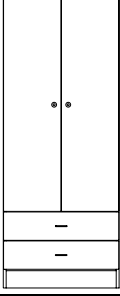
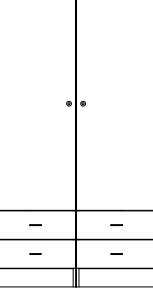
Kensington Maple	Solar Oak	Wild Cherry	Windsor Mahogany	Shaker Cherry
Cocobala	Talas Cherry	Aria	Arctic Groovz	



# Casegood Measurements

Collection	Suffix
Charleston	35
Magnolia	34
Berkeley	33
Peachtree	32
Veranda	36
Bedford	46
Shannon	48
Denmark	50
Prestwick	51
Woodland Park	54
Oak Park	44
New London	68
Savannah	52
Hamilton	28
Avante	24
Georgetown	31
Georgetown	W-31
Georgetown	T-31
Highlands	25
Avondale	22

## Nominal Dimensions for Casegoods

	Door/Drawer Bedside Cabinet <b>A30-XX</b> W-21", D-18", H-30"
	Three Drawer Bedside Chest <b>A31-XX</b> W-21", D-18", H-30"
	Three Drawer Dresser <b>A36-XX</b> W-30", D-18", H-30"
	Four Drawer Dresser <b>A37-XX</b> W-30", D-18", H-36"
	Side-by-Side Six Drawer Dresser <b>A371-XX</b> W-42", D-18", H-30"
	Two Door Wardrobe <b>B01-XX</b> W-24", D-22", H-76" <b>B011-XX</b> W-30", D-22", H-76" <b>B012-XX</b> W-36", D-22", H-76" <b>B013-XX</b> W-42", D-22", H-76" <b>B014-XX</b> W-48", D-22", H-76"
	Two Door, Two Drawer Wardrobe <b>B02-XX</b> W-24", D-22", H-76" <b>B021-XX</b> W-30", D-22", H-76" <b>B022-XX</b> W-36", D-22", H-76"
	Two Door, Side-by-Side Four Drawer Wardrobe <b>B023-XX</b> W-42", D-22", H-76" <b>B024-XX</b> W-48", D-22", H-76"



**1.678.201.3200 Fax 1.770.368.4954**

Information contained herein is subject to change.

The most current and complete product information can be found on our website.  
[www.grahamfield.com](http://www.grahamfield.com)

Follow us on   

© 2017, GF Health Products, Inc. All Rights Reserved.  
Basic American is a trademark of GF Health Products, Inc.  
GF Health Products, Inc. is an ISO 13485 Certified Company.

GF1700016RevC17