



2935 Northeast Parkway • Atlanta, Georgia 30360
T: 770.368.4700

PRESENTS

GEO MEDLEY



GEO MEDLEY



CRYPTON® SEATING FABRICS

	Content	Weight	Finish / Backing	Directional / Railroaded	Repeat	Abrasion	Flammability*
Align	51% Acrylic, 49% Polyester	16.3 oz	Crypton®	Yes / No	H - 7.25" V - 7.125"	50,000 Double Rubs	California Bulletin 117-E NFPA 260 Class 1 UFAC Class 1
Parallel	51% Acrylic, 49% Polyester	15.2 oz	Crypton®	Yes / No	H - 3.75" V - 2.5"	50,000 Double Rubs	California Bulletin 117-E NFPA 260 Class 1 UFAC Class 1
Segment	51% Acrylic, 49% Polyester	16.9 oz	Crypton®	Yes / No	H - 4.875" V - 2.375"	50,000 Double Rubs	California Bulletin 117-E NFPA 260 Class 1 UFAC Class 1
Structure	51% Acrylic, 49% Polyester	15.1 oz	Crypton®	Yes / No	H - 3.0" V - 3.125"	50,000 Double Rubs	California Bulletin 117-E NFPA 260 Class 1 UFAC Class 1
Triad	51% Acrylic, 49% Polyester	13.8 oz	Crypton®	Yes / No	H - 1.0" V - 2.75"	50,000 Double Rubs	California Bulletin 117-E NFPA 260 Class 1 UFAC Class 1

Roll Width - 54"

All patterns in this collection **meet or exceed** ACT® Performance Guidelines.



*ACT® Registered Certification Marks

Dye lots may vary from samples shown.

Final determination of the suitability of this product for an application rests with the user.

***Flammability:** This term and any corresponding data refer to the typical performance in the specific tests indicated and should not be construed to imply the behavior of this or any other material under actual fire conditions.



Each fiber of a Crypton® fabric is permanently encapsulated to resist stains, fungus, bacteria and mildew. Crypton's breathable moisture barrier is integrated into the fabric, ensuring permanent protection. Crypton® Super Fabrics are engineered to be extremely easy to clean, allowing spots and spills to be easily removed with soap and water.

© 2008 Crypton, Inc. All rights reserved. Crypton and the red planet logo are registered trademarks of Crypton, Inc. U.S. Patents 5,565,265, 5,747,392, 6,024,823, 6,165,920, 6,207,250, 6,251,210, 6,492,001, 6,541,138 and 6,884,491. Other U.S. and international patents pending.

Align



Multiple repeats shown.
Actual repeat is H - 7.25" and V - 7.125"



2935 Northeast Parkway • Atlanta, Georgia 30360
T: 770.368.4700

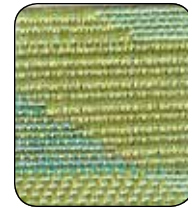
PARALLEL



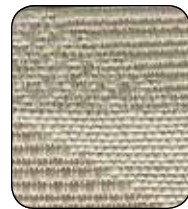
1007164 Blackberry



1007167 Marina



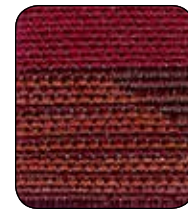
1007166 Lagoon



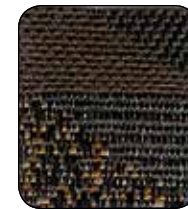
1007169 Angora



1007168 Mineral



1007163 Scarlet



1007162 Acorn



1007165 Mirage

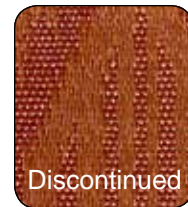
ALIGN



1007219 Cabernet



1007227 Alabaster



1007221 Sunset



1007226 Pewter



1007220 Crimson



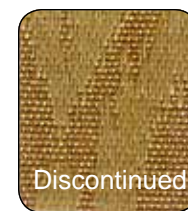
1007224 Calypso



1007223 Mint



1007222 Chartreuse



1007225 Oro



1007218 Coffee

STRUCTURE



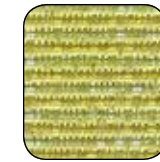
1007145 Maroon



1007151 Mist



1007150 Beige



1007149 Oasis



1007148 Kelp



1007146 Cherry



1007143 Umber



1007144 Ink



1007147 Navy

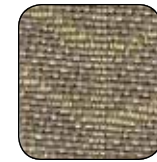
SEGMENT



1007154 Cranberry



1007160 Chiffon



1007159 Cobblestone



1007155 Harvest



1007153 Graphite



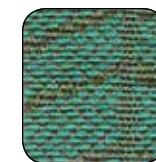
1007161 Plaster



1007157 Capri



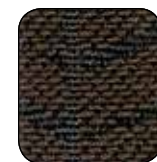
1007158 Citron



1007156 Bahama



1007154 Cranberry



1007152 Brownie

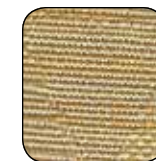
TRIAD



1007136 Wine



1007142 Oyster



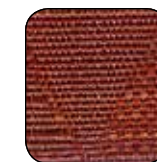
1007141 Desert



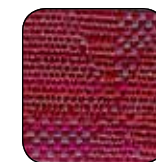
1007140 Celadon



1007139 Sage



1007138 Cinnamon



1007137 Lava



1007134 Hazelnut



1007135 Raven



2935 Northeast Parkway • Atlanta, Georgia 30360
T: 770.368.4700

PRESENTS

GEO MEDLEY



	Content	Weight	Finish / Backing	Directional / Railroaded	Repeat	Abrasion	Flammability*
Align	51% Acrylic, 49% Polyester	16.3 oz	Crypton®	Yes / No	H - 7.25" V - 7.125"	50,000 Double Rubs	California Bulletin 117-E NFPA 260 Class 1 UFAC Class 1
Parallel	51% Acrylic, 49% Polyester	15.2 oz	Crypton®	Yes / No	H - 3.75" V - 2.5"	50,000 Double Rubs	California Bulletin 117-E NFPA 260 Class 1 UFAC Class 1
Segment	51% Acrylic, 49% Polyester	16.9 oz	Crypton®	Yes / No	H - 4.875" V - 2.375"	50,000 Double Rubs	California Bulletin 117-E NFPA 260 Class 1 UFAC Class 1
Structure	51% Acrylic, 49% Polyester	15.1 oz	Crypton®	Yes / No	H - 3.0" V - 3.125"	50,000 Double Rubs	California Bulletin 117-E NFPA 260 Class 1 UFAC Class 1
Triad	51% Acrylic, 49% Polyester	13.8 oz	Crypton®	Yes / No	H - 1.0" V - 2.75"	50,000 Double Rubs	California Bulletin 117-E NFPA 260 Class 1 UFAC Class 1

Roll Width - 54"

All patterns in this collection **meet or exceed** ACT® Performance Guidelines.



*ACT® Registered Certification Marks

Dye lots may vary from samples shown.

Final determination of the suitability of this product for an application rests with the user.

***Flammability:** This term and any corresponding data refer to the typical performance in the specific tests indicated and should not be construed to imply the behavior of this or any other material under actual fire conditions.



Each fiber of a Crypton® fabric is permanently encapsulated to resist stains, fungus, bacteria and mildew. Crypton's breathable moisture barrier is integrated into the fabric, ensuring permanent protection. Crypton® Super Fabrics are engineered to be extremely easy to clean, allowing spots and spills to be easily removed with soap and water.

© 2008 Crypton, Inc. All rights reserved. Crypton and the red planet logo are registered trademarks of Crypton, Inc. U.S. Patents 5,565,265, 5,747,392, 6,024,823, 6,165,920, 6,207,250, 6,251,210, 6,492,001, 6,541,138 and 6,884,491. Other U.S. and international patents pending.

Align



Multiple repeats shown.

Actual repeat is H - 7.25" and V - 7.125"



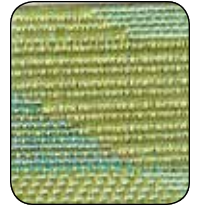
PARALLEL



1007164 Blackberry



1007167 Marina



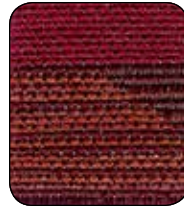
1007166 Lagoon



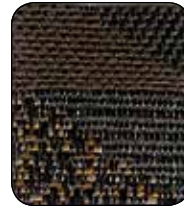
1007169 Angora



1007168 Mineral



1007163 Scarlet



1007162 Acorn



1007165 Mirage

ALIGN



1007219 Cabernet



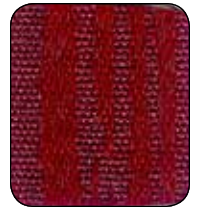
1007227 Alabaster



1007221 Sunset



1007226 Pewter



1007220 Crimson



1007224 Calypso



1007223 Mint



1007222 Chartreuse

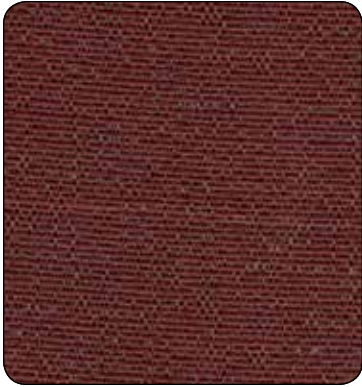


1007225 Oro



1007218 Coffee

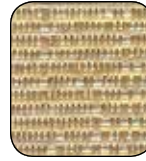
STRUCTURE



1007145 Maroon



1007151 Mist



1007150 Beige



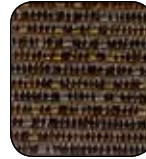
1007149 Oasis



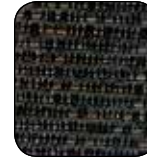
1007148 Kelp



1007146 Cherry



1007143 Umber



1007144 Ink

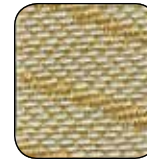


1007147 Navy

SEGMENT



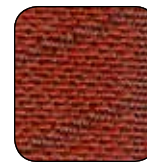
1007154 Cranberry



1007160 Chiffon



1007159 Cobblestone



1007155 Harvest



1007153 Graphite



1007161 Plaster



1007157 Capri



1007158 Citron



1007156 Bahama

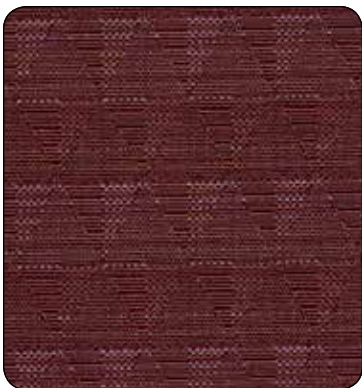


1007154 Cranberry



1007152 Brownie

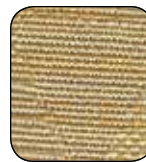
TRIAD



1007136 Wine



1007142 Oyster



1007141 Desert



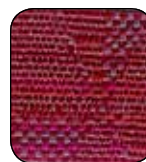
1007140 Celadon



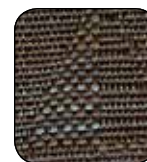
1007139 Sage



1007138 Cinnamon



1007137 Lava



1007134 Hazelnut



1007135 Raven