



2935 Northeast Parkway • Atlanta, Georgia 30360  
T: 770.368.4700

PRESENTS  
MODERN MIX



MODERN MIX



CRYPTON® SEATING FABRICS

Caption	Content	Weight	Finish / Backing	Directional / Railroaded	Repeat	Abrasion	Flammability
<b>Caption</b>	51% Acrylic, 49% Polyester	14.7 oz	Crypton®	Yes / No	H - 2.5" V - 5.375"	50,000 Double Rubs	California Bulletin 117-E NFPA 260 Class 1 UFAC Class 1
<b>Column</b>	51% Acrylic, 49% Polyester	15.2 oz	Crypton®	Yes / Yes	V - 4.25"	50,000 Double Rubs	California Bulletin 117-E NFPA 260 Class 1 UFAC Class 1
<b>Draft</b>	51% Acrylic, 49% Polyester	14.9 oz	Crypton®	Yes / No	N / A	50,000 Double Rubs	California Bulletin 117-E NFPA 260 Class 1 UFAC Class 1
<b>Edit</b>	51% Acrylic, 49% Polyester	15.1 oz	Crypton®	Yes / No	H - 3.625" V - 3.5"	50,000 Double Rubs	California Bulletin 117-E NFPA 260 Class 1 UFAC Class 1
<b>Proof</b>	51% Acrylic, 49% Polyester	14.7 oz	Crypton®	Yes / No	H - 7.25" V - 7.5"	50,000 Double Rubs	California Bulletin 117-E NFPA 260 Class 1 UFAC Class 1

Roll Width - 54"

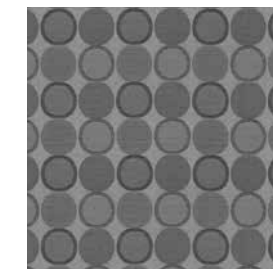
All patterns in this collection **meet or exceed** ACT® Performance Guidelines.



Each fiber of a Crypton® fabric is permanently encapsulated to resist stains, fungus, bacteria and mildew. Crypton's breathable moisture barrier is integrated into the fabric, ensuring permanent protection. Crypton® Super Fabrics are engineered to be extremely easy to clean, allowing spots and spills to be easily removed with soap and water.

© 2008 Crypton, Inc. All rights reserved. Crypton and the red planet logo are registered trademarks of Crypton, Inc. U.S. Patents 5,565,265, 5,747,392, 6,024,823, 6,165,920, 6,207,250, 6,251,210, 6,492,001, 6,541,138 and 6,884,491. Other U.S. and international patents pending.

**Edit**



Multiple repeats shown.  
Actual repeat is H - 3.625" and V - 3.5"

**Proof**



Multiple repeats shown.  
Actual repeat is H - 7.25" and V - 7.5"



2935 Northeast Parkway • Atlanta, Georgia 30360  
T: 770.368.4700

# PROOF



1006801 Khaki



1006804 Sapphire



1006807 Earth



1006802 Golden



1006806 Burgundy

# EDIT



1006917 Taupe



1006920 Lentil



1006921 Atlantic



1006923 Violet



1006917 Taupe



1006918 Oro



1006924 Mocha

# COLUMN



1006926 Chambray



1006927 Capri



1006929 Fiesta



1006930 Magenta



1006932 Burnt Sienna



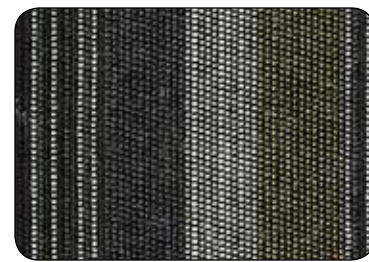
1006931 Eggplant



1006933 Alpine



1006934 Indigo



1006935 Tuxedo

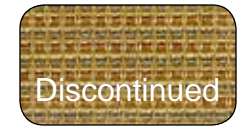
# DRAFT



1006775 Silver



1006776 Beige



1006777 Mustard



1006782 Java



1006779 Bluestone



1006780 Spice



1006781 Merlot

# CAPTION



1006816 Malt



1006820 Navy



1006819 Jade



1006821 Scarlet



1006816 Malt



1006817 Brass



1006822 Truffle



2935 Northeast Parkway • Atlanta, Georgia 30360  
T: 770.368.4700

PRESENTS

MODERN MIX



# MODERN MIX



## CRYPTON® SEATING FABRICS

	Content	Weight	Finish / Backing	Directional / Railroaded	Repeat	Abrasion	Flammability
<b>Caption</b>	51% Acrylic, 49% Polyester	14.7 oz	Crypton®	Yes / No	H - 2.5" V - 5.375"	50,000 Double Rubs	California Bulletin 117-E NFPA 260 Class 1 UFAC Class 1
<b>Column</b>	51% Acrylic, 49% Polyester	15.2 oz	Crypton®	Yes / Yes	V - 4.25"	50,000 Double Rubs	California Bulletin 117-E NFPA 260 Class 1 UFAC Class 1
<b>Draft</b>	51% Acrylic, 49% Polyester	14.9 oz	Crypton®	Yes / No	N / A	50,000 Double Rubs	California Bulletin 117-E NFPA 260 Class 1 UFAC Class 1
<b>Edit</b>	51% Acrylic, 49% Polyester	15.1 oz	Crypton®	Yes / No	H - 3.625" V - 3.5"	50,000 Double Rubs	California Bulletin 117-E NFPA 260 Class 1 UFAC Class 1
<b>Proof</b>	51% Acrylic, 49% Polyester	14.7 oz	Crypton®	Yes / No	H - 7.25" V - 7.5"	50,000 Double Rubs	California Bulletin 117-E NFPA 260 Class 1 UFAC Class 1

Roll Width - 54"

All patterns in this collection **meet or exceed** ACT® Performance Guidelines.



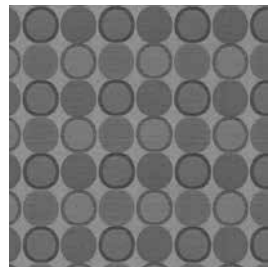
\*ACT® Registered Certification Marks



Each fiber of a Crypton® fabric is permanently encapsulated to resist stains, fungus, bacteria and mildew. Crypton's breathable moisture barrier is integrated into the fabric, ensuring permanent protection. Crypton® Super Fabrics are engineered to be extremely easy to clean, allowing spots and spills to be easily removed with soap and water.

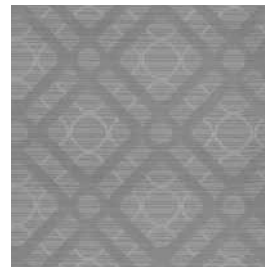
© 2008 Crypton, Inc. All rights reserved. Crypton and the red planet logo are registered trademarks of Crypton, Inc. U.S. Patents 5,565,265, 5,747,392, 6,024,823, 6,165,920, 6,207,250, 6,251,210, 6,492,001, 6,541,138 and 6,884,491. Other U.S. and international patents pending.

### Edit



Multiple repeats shown.  
Actual repeat is H - 3.625" and V - 3.5"

### Proof



Multiple repeats shown.  
Actual repeat is H - 7.25" and V - 7.5"



2935 Northeast Parkway • Atlanta, Georgia 30360  
T: 770.368.4700

# PROOF



1006801 Khaki



1006804 Sapphire



1006807 Earth



1006802 Golden



1006806 Burgundy

# COLUMN



1006926 Chambray



1006927 Capri



1006929 Fiesta



1006930 Magenta



1006932 Burnt Sienna



1006931 Eggplant



1006933 Alpine



1006934 Indigo



1006935 Tuxedo

## EDIT



1006917 Taupe



1006920 Lentil



1006921 Atlantic



1006923 Violet



1006917 Taupe



1006918 Oro



1006924 Mocha

## DRAFT



1006775 Silver



1006776 Beige



1006777 Mustard



1006782 Java



1006779 Bluestone



1006780 Spice



1006781 Merlot

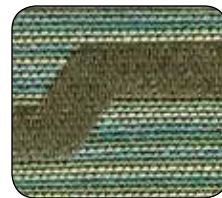
## CAPTION



1006816 Malt



1006820 Navy



1006819 Jade



1006821 Scarlet



1006816 Malt



1006817 Brass



1006822 Truffle