



2935 Northeast Parkway • Atlanta, Georgia 30360
T: 770.368.4700

PRESENTS
ORGANIC OASIS



ORGANIC OASIS

CRYPTON® SEATING FABRICS



| | Content | Weight | Finish / Backing | Directional / Railroaded | Repeat | Abrasion | Flammability |
|----------------|----------------------------|---------|------------------|--------------------------|----------------------------|--------------------|---|
| Essence | 64% Polyester, 36% Acrylic | 13.9 oz | Crypton® | Yes / No | N / A | 50,000 Double Rubs | California Bulletin 117-E NFPA 260 Class 1 UFAC Class 1 |
| Guru | 53% Acrylic, 47% Polyester | 14.9 oz | Crypton® | Yes / No | H - 3.625" V - 3.625" | 50,000 Double Rubs | California Bulletin 117-E NFPA 260 Class 1 UFAC Class 1 |
| Nirvana | 51% Acrylic, 49% Polyester | 14.9 oz | Crypton® | Yes / No | H - 2.875" V - 2.0" | 50,000 Double Rubs | California Bulletin 117-E NFPA 260 Class 1 UFAC Class 1 |
| Peace | 51% Acrylic, 49% Polyester | 14.4 oz | Crypton® | Yes / No | H - 14.625" V - 8.4375" | 50,000 Double Rubs | California Bulletin 117-E NFPA 260 Class 1 UFAC Class 1 |
| Retreat | 51% Acrylic, 49% Polyester | 15.6 oz | Crypton® | Yes / No | H - 14.75" V - 13.5" | 50,000 Double Rubs | California Bulletin 117-E NFPA 260 Class 1 UFAC Class 1 |

Roll Width - 54"

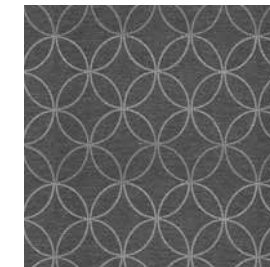
All patterns in this collection **meet or exceed** ACT® Performance Guidelines.



Each fiber of a Crypton® fabric is permanently encapsulated to resist stains, fungus, bacteria and mildew. Crypton's breathable moisture barrier is integrated into the fabric, ensuring permanent protection. Crypton® Super Fabrics are engineered to be extremely easy to clean, allowing spots and spills to be easily removed with soap and water.

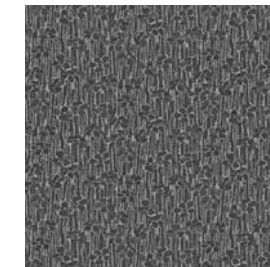
© 2008 Crypton, Inc. All rights reserved. Crypton and the red planet logo are registered trademarks of Crypton, Inc. U.S. Patents 5,565,265, 5,747,392, 6,024,823, 6,165,920, 6,207,250, 6,251,210, 6,492,001, 6,541,138 and 6,884,491. Other U.S. and international patents pending.

Guru



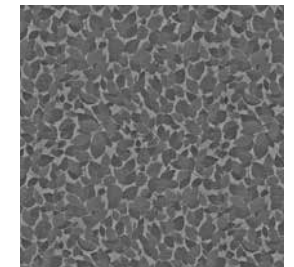
Multiple repeats shown.
Actual repeat is H - 3.625" and V - 3.625"

Peace



Multiple repeats shown.
Actual repeat is H - 14.625" and V - 8.4375"

Retreat



Multiple repeats shown.
Actual repeat is H - 14.75" and V - 13.5"



2935 Northeast Parkway • Atlanta, Georgia 30360
T: 770.368.4700

RETREAT



1006798 Harvest



1006800 Mineral



1006799 Auburn



1006796 Pool



1006795 Mojave

GURU



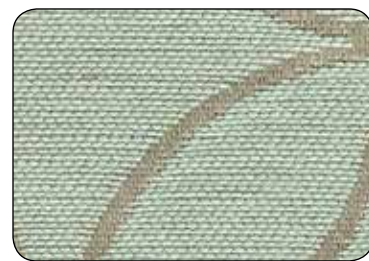
1006911 Sunrise



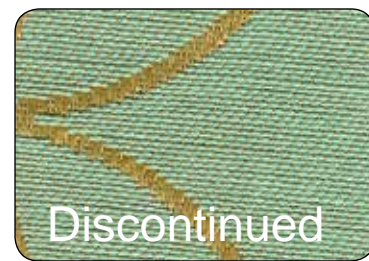
1006907 Sand Dollar



1006910 Haze



1006909 Sky



1006908 Sea Foam



1006916 Burnt Orange



1006913 Chestnut

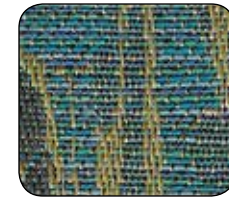


1006914 Aubergine

PEACE



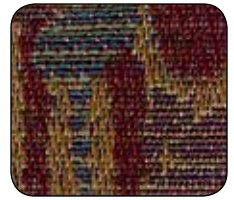
1006828 Gingersnap



1006826 Blueberry



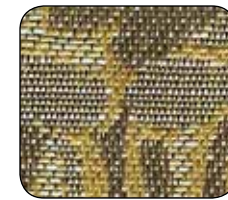
1006823 Wheat



1006827 Iris



1006825 Lagoon



1006824 Mushroom



1006829 Charcoal

ESSENCE



1006786 Honey



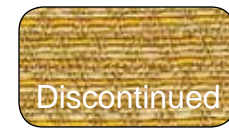
1006788 Moss



1006793 Coffee



1006794 Eclipse



1006786 Honey



1006792 Terra Cotta



1006790 Plum



1006785 Smoke



1006784 Tumbleweed



1006789 Calypso

NIRVANA



1006812 Amber



1006808 Sugar



1006809 Caramel



1006811 Dew



1006815 Chocolate



1006813 Rustic



1006814 Wine



2935 Northeast Parkway • Atlanta, Georgia 30360
T: 770.368.4700

PRESENTS

ORGANIC OASIS



ORGANIC OASIS



CRYPTON® SEATING FABRICS

| | Content | Weight | Finish / Backing | Directional / Railroaded | Repeat | Abrasion | Flammability |
|----------------|----------------------------|---------|------------------|--------------------------|----------------------------|--------------------|---|
| Essence | 64% Polyester, 36% Acrylic | 13.9 oz | Crypton® | Yes / No | N / A | 50,000 Double Rubs | California Bulletin 117-E NFPA 260 Class 1 UFAC Class 1 |
| Guru | 53% Acrylic, 47% Polyester | 14.9 oz | Crypton® | Yes / No | H - 3.625" V - 3.625" | 50,000 Double Rubs | California Bulletin 117-E NFPA 260 Class 1 UFAC Class 1 |
| Nirvana | 51% Acrylic, 49% Polyester | 14.9 oz | Crypton® | Yes / No | H - 2.875" V - 2.0" | 50,000 Double Rubs | California Bulletin 117-E NFPA 260 Class 1 UFAC Class 1 |
| Peace | 51% Acrylic, 49% Polyester | 14.4 oz | Crypton® | Yes / No | H - 14.625" V - 8.4375" | 50,000 Double Rubs | California Bulletin 117-E NFPA 260 Class 1 UFAC Class 1 |
| Retreat | 51% Acrylic, 49% Polyester | 15.6 oz | Crypton® | Yes / No | H - 14.75" V - 13.5" | 50,000 Double Rubs | California Bulletin 117-E NFPA 260 Class 1 UFAC Class 1 |

Roll Width - 54"

All patterns in this collection **meet or exceed** ACT® Performance Guidelines.



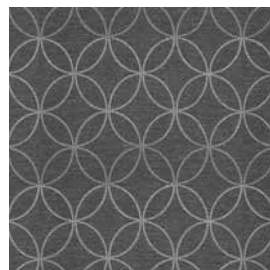
*ACT® Registered Certification Marks



Each fiber of a Crypton® fabric is permanently encapsulated to resist stains, fungus, bacteria and mildew. Crypton's breathable moisture barrier is integrated into the fabric, ensuring permanent protection. Crypton® Super Fabrics are engineered to be extremely easy to clean, allowing spots and spills to be easily removed with soap and water.

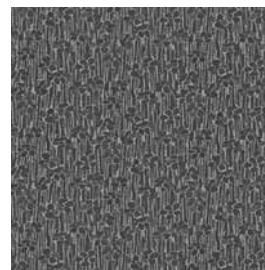
© 2008 Crypton, Inc. All rights reserved. Crypton and the red planet logo are registered trademarks of Crypton, Inc. U.S. Patents 5,565,265, 5,747,392, 6,024,823, 6,165,920, 6,207,250, 6,251,210, 6,492,001, 6,541,138 and 6,884,491. Other U.S. and international patents pending.

Guru



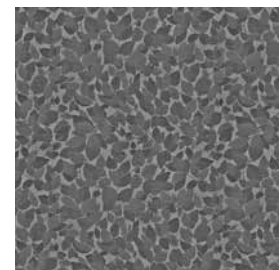
Multiple repeats shown.
Actual repeat is H - 3.625" and V - 3.625"

Peace



Multiple repeats shown.
Actual repeat is H - 14.625" and V - 8.4375"

Retreat



Multiple repeats shown.
Actual repeat is H - 14.75" and V - 13.5"



2935 Northeast Parkway • Atlanta, Georgia 30360
T: 770.368.4700

RETREAT



1006798 Harvest



1006800 Mineral



1006799 Auburn



1006796 Pool



1006795 Mojave

GURU



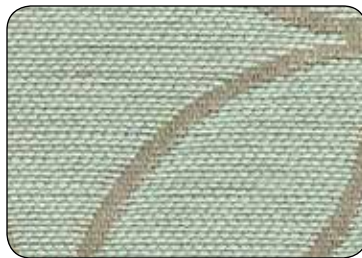
1006911 Sunrise



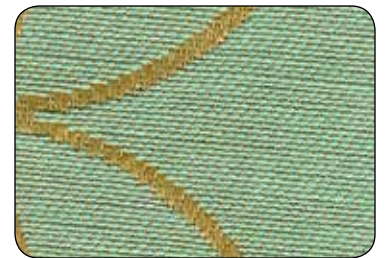
1006907 Sand Dollar



1006910 Haze



1006909 Sky



1006908 Sea Foam



1006916 Burnt Orange



1006913 Chestnut

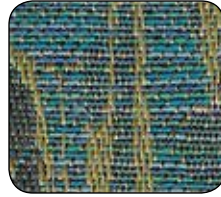


1006914 Aubergine

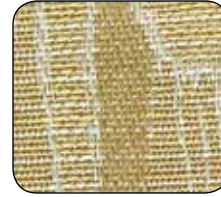
PEACE



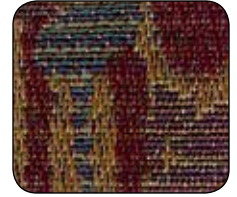
1006828 Gingersnap



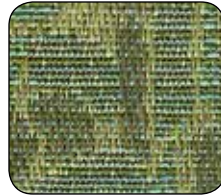
1006826 Blueberry



1006823 Wheat



1006827 Iris



1006825 Lagoon



1006824 Mushroom



1006829 Charcoal

ESSENCE



1006786 Honey



1006788 Moss



1006793 Coffee



1006794 Eclipse



1006786 Honey



1006792 Terra Cotta



1006790 Plum



1006785 Smoke



1006784 Tumbleweed



1006789 Calypso

NIRVANA



1006812 Amber



1006808 Sugar



1006809 Caramel



1006811 Dew



1006815 Chocolate



1006813 Rustic



1006814 Wine